



**TEHNOPLAST**

Design in function of safety



### Company was founded in 1967 in Zemun.

Tradition built on contemporary technology assured recognition and quality. Inside the 4500m<sup>2</sup> of business -warehouse space are placed sales, supplies, accounting and administrative services, design construction team, modern tool shop, as well as the production run for spouting of plastic. As we run a complete technological operation, our company is able to answer the production needs of already existing articles as well as the development of completely new products in a short period of time. The quality and the "safety of home installations" guaranteed by many domestic and international standards that we have adopted is the sign of quality of EPS, CB, IEC, DIN and ÖVE. We always want our customers to be one step ahead. The best price/quality/design combination that we offer places us at the very top – ahead our competitors.

We are present on the markets of 30 countries world wide.

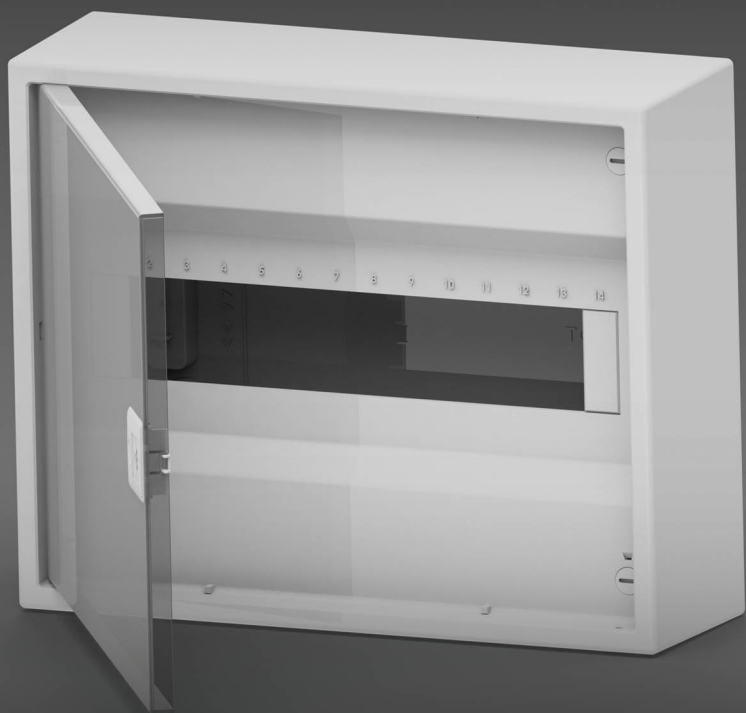
---

*Many years of experience, excellent work that our team has been doing, complete attention to detail, overcoming of every obstacle before it occurs, as well as the quick solving of every problem constitute our goals.*





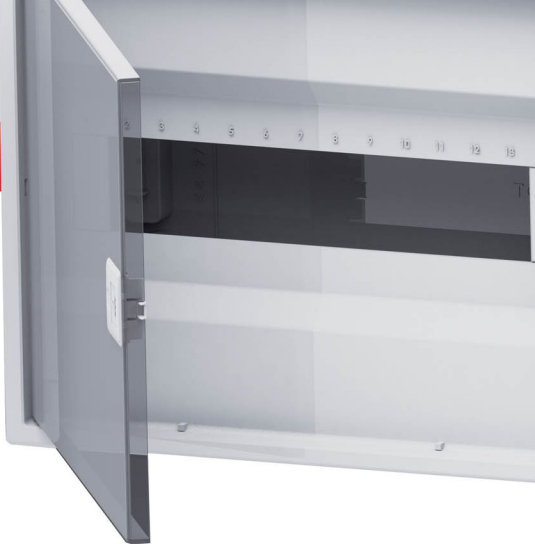




series **alfa**

ENCLOSURES IP40 – FLUSH MOUNTING

# series **alfa**



name N 12 ALFA

type IP 40 □ In 63A

dimensions 251 x 310 x 96

number of modules 12+2

PE, N terminal 2x10

N 24 ALFA

IP 40 □ In 63A

377 x 310 x 96

24+4

2x13

N 36 ALFA

IP 40 □ In 63A

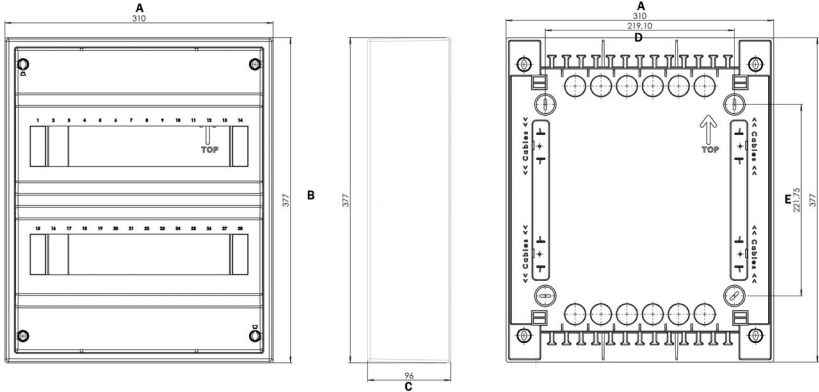
502 x 310 x 96

36+6

2x15



PLASTIC ENCLOSURE WITH PLASTIC DOOR



Enclosures are completely assembled with all necessary part, such as:

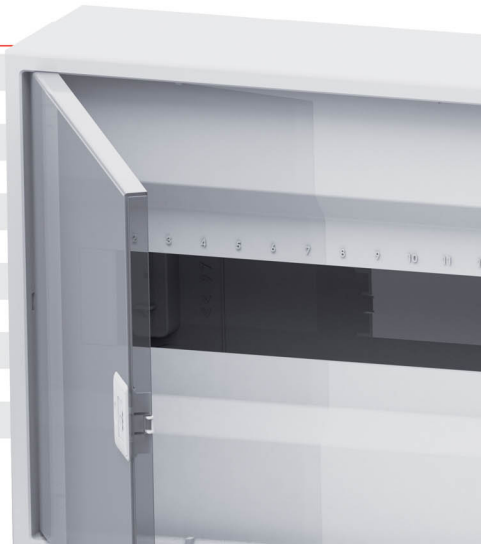
- DIN rail
- Insulated terminals, neutral and ground
- Cover for blank space
- Needed installation accessories
- Manual instruction

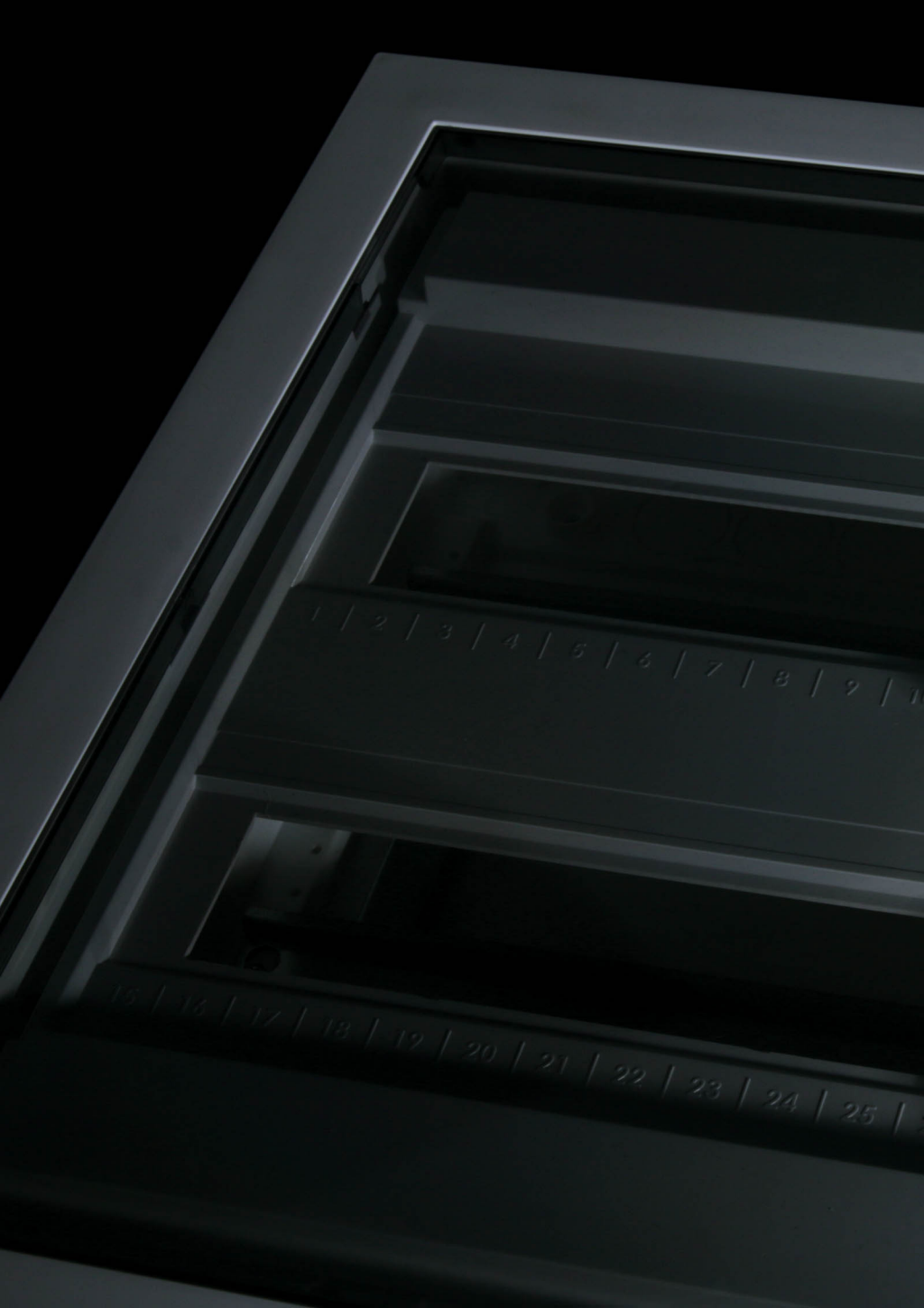
\*Additional terminal upon request

## series alfa

	A	B	C	D	E
<b>N12ALFA</b>	310 mm	251 mm	96 mm	96 mm	219 mm
<b>N24ALFA</b>	310 mm	377 mm	96 mm	219 mm	222 mm
<b>N36ALFA</b>	310 mm	502 mm	96 mm	219 mm	347 mm

Material	Styrene
Color	RAL 9003
Door	Styrene Acrylonitrile
Color	Transparent & White
Glow wire test	650°C
Terminal holder	Self extinguish material
Glow wire test	960°C
Temperature	-25°C / +60°C
Rated voltage	AC 400V
According to	IEC 60670
Halogen free	Yes





1 | 2 | 3 | 4 | 5 | 6 | 7 | 8 | 9 | 10

15 | 16 | 17 | 18 | 19 | 20 | 21 | 22 | 23 | 24 | 25



series **f**

ENCLOSURES IP40 – FLUSH MOUNTING

# series f



name U 12 F

type IP 40 □ In 63A

dimensions 346 x 317 x 92

number of modules 12 + 2

PE, N terminal 2 x 10

name U 24 F

type IP 40 □ In 63A

dimensions 346 x 442 x 92

number of modules 24 + 4

PE, N terminal 2 x 13

name U 36 F

type IP 40 □ In 63A

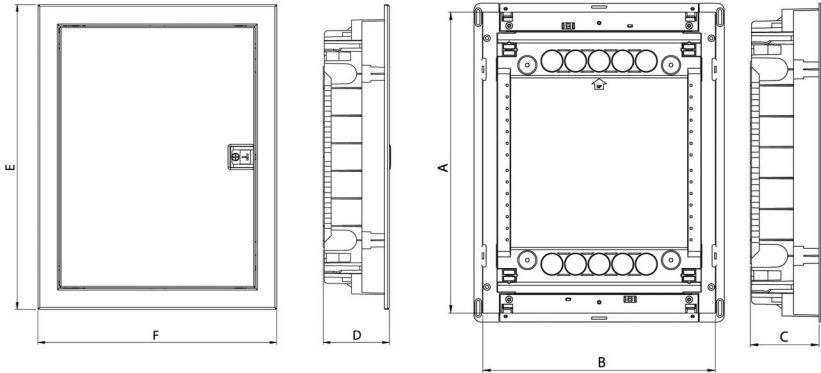
dimensions 346 x 592 x 92

number of modules 36 (+6)

PE, N terminal 2 x 15



PLASTIC ENCLOSURE WITH PLASTIC DOOR



Enclosures are completely assembled with all necessary part, such as:

- DIN rail
- Insulated terminals, neutral and ground
- Cover for blank space
- Needed installation accessories
- Manual instruction

\*Additional terminal upon request

series **f**

	A	B	C	D	E	F
<b>U12F</b>	274 mm	306 mm	87 mm	92 mm	317 mm	346 mm
<b>U24F</b>	399 mm	306 mm	87 mm	96 mm	442 mm	346 mm
<b>U36F</b>	549 mm	306 mm	87 mm	92 mm	592 mm	346 mm

Material	Acrylonitrile butadiene styrene
Color	RAL 9003
Door	Plastic
Color	Transparent
Glow wire test	850°C
Terminal holder	Self extinguish material
Glow wire test	960°C
Temperature	-25°C / +60°C
Rated voltage	AC 400V
According to	IEC 60670
Halogen free	Yes









series e

ENCLOSURES IP40 - FLUSH MOUNTING

# series e



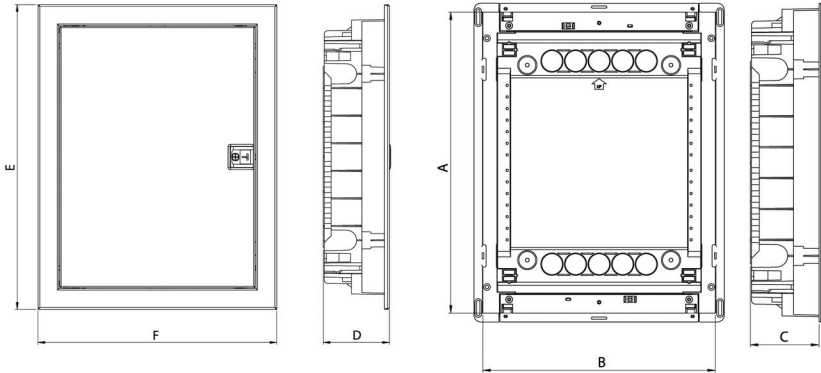
\*Optional  
with transparent plastic doors



name	U 12 E	U 24 E	U 36 E	U 48 E
type	IP 65 □ In 63A	IP 65 □ In 63A	IP 65 □ In 63A	IP 65 □ In 63A
dimensions	346 x 317 x 92	346 x 442 x 92	346 x 592 x 92	346 x 717 x 92
number of modules	12 + 2	24 + 4	36 + 6	48 + 8
PE, N terminal	2 x 10	2 x 13	2 x 15	2 x 20



PLASTIC ENCLOSURE WITH METAL DOOR



Enclosures are completely assembled with all necessary part, such as:

- DIN rail
- Insulated terminals, neutral and ground
- Cover for blank space
- Needed installation accessories
- Manual instruction

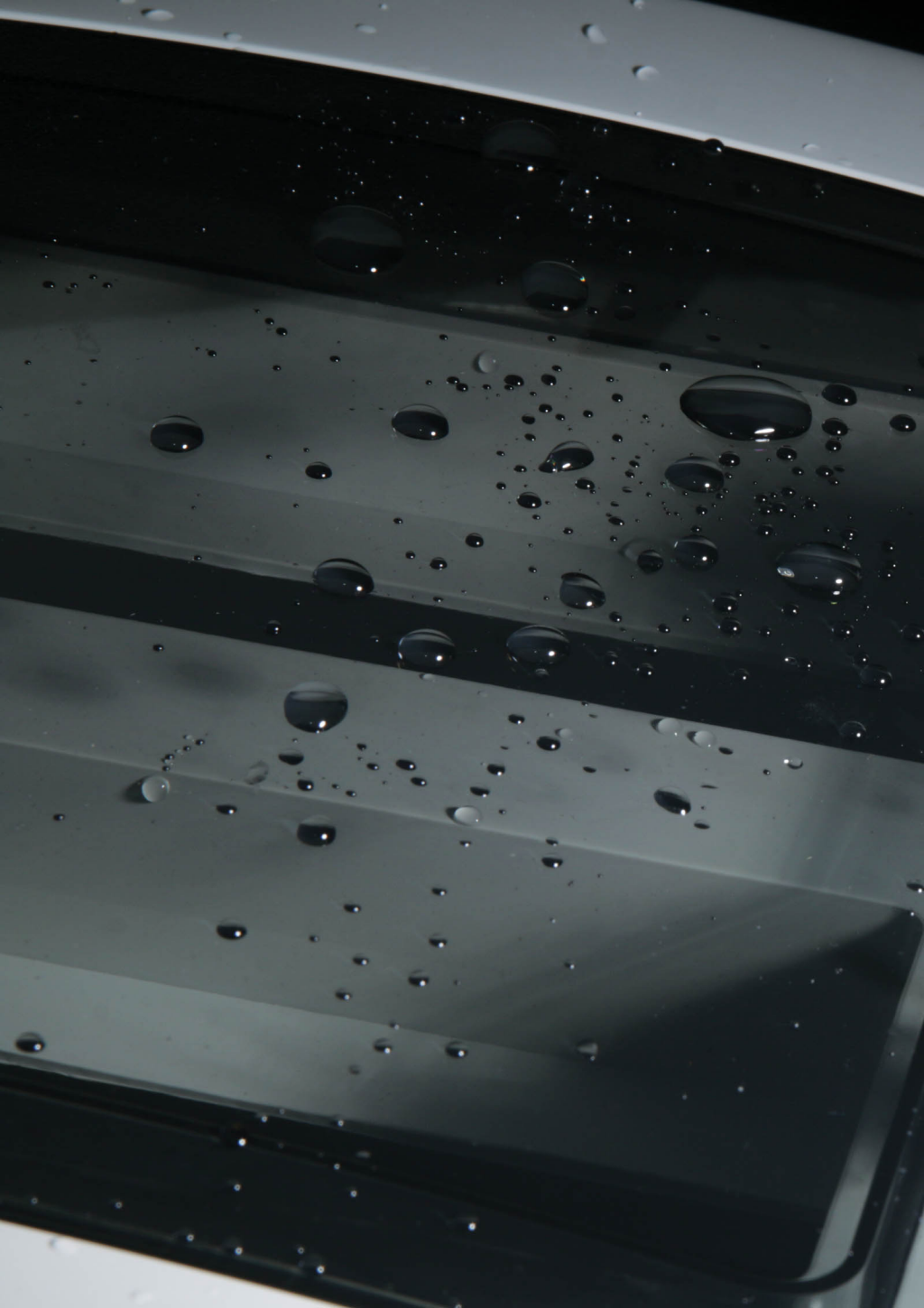
\*Additional terminal upon request

series e

	A	B	C	D	E	F
<b>U12E</b>	274 mm	306 mm	87 mm	92 mm	317 mm	346 mm
<b>U24E</b>	399 mm	306 mm	87 mm	92 mm	442 mm	346 mm
<b>U36E</b>	549 mm	306 mm	87 mm	92 mm	592 mm	346 mm
<b>U48E</b>	673 mm	306 mm	87 mm	92 mm	717 mm	346 mm

Material	Acrylonitrile butadiene styrene
Color	RAL 9003
Door	Metal
Color	White
Glow wire test	850°C
Terminal holder	Self extinguish material
Glow wire test	960°C
Temperature	-25°C / +60°C
Rated voltage	AC 400V
According to	IEC 60670
Halogen free	Yes







series **d**

ENCLOSURES IP65 – SURFACE MOUNTING

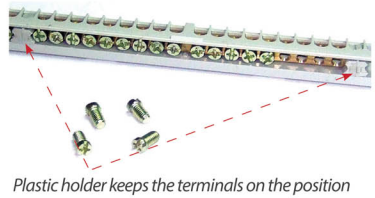
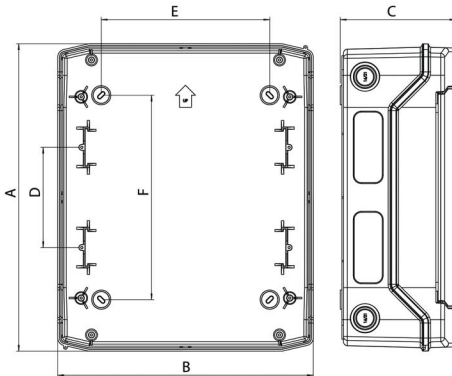
# series d



name	N 4 D	N 8 D	N 12 D	N 24 D	N 36 D
type	IP 65 □ In 63A	IP 65 □ In 63A	IP 65 □ In 63A	IP 65 □ In 63A	IP 65 □ In 63A
dimensions	128 x 201 x 120	202 x 201 x 120	318 x 259 x 144	318 x 384 x 144	319 x 508 x 144
no. of modules	4	8	12	24	36
PE, N terminal	2 x 4	2 x 8	2 x 10	2 x 13	2 x 15



PLASTIC ENCLOSURE WITH PLASTIC DOOR



*Plastic holder keeps the terminals on the position*

Enclosures are completely assembled with all necessary part, such as:

- DIN rail
- Insulated terminals, neutral and ground
- Cover for blank space
- Needed installation accessories
- Plastic cap for screws
- Manual instruction

\*Additional terminal upon request

**series d**

	A	B	C	D	E	F
<b>N4D</b>	201 mm	128 mm	120 mm	-	78 mm	111 mm
<b>N8D</b>	201 mm	202 mm	120 mm	-	100 mm	140 mm
<b>N12D</b>	259 mm	319 mm	144 mm	-	210 mm	130 mm
<b>U24D</b>	384 mm	319 mm	144 mm	125 mm	210 mm	255 mm
<b>U36D</b>	508 mm	319 mm	144 mm	125 mm	210 mm	380 mm

Material	Acrylonitrile acrylic styrene
Color	RAL 7035
Door	Polycarbonate
Color	Transparent
Glow wire test	650°C
Terminal holder	Self extinguish material
Glow wire test	960°C
Temperature	-25°C / +60°C
Rated voltage	AC400V / DC 1000V
According to	IEC 60670 / IEC 60228
UV stable	Yes
Halogen free	Yes





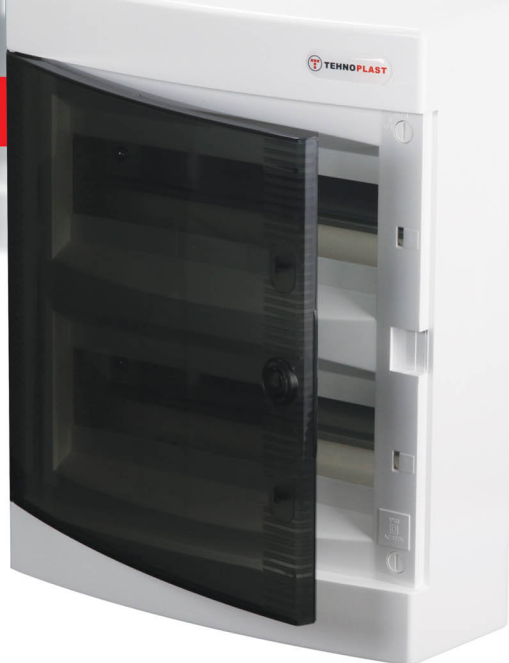


 **TEHNOPLAST**

**series c**

ENCLOSURES IP40 – SURFACE MOUNTING

# series C



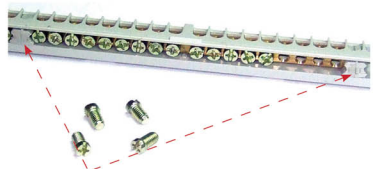
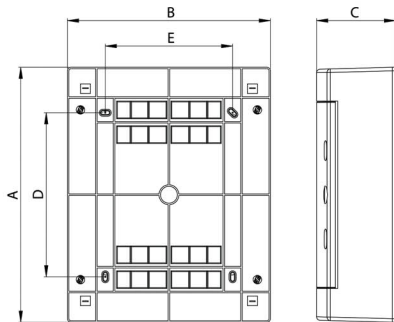
\* Optional  
with white plastic doors



name	N 8 C	N 12 C	N 24 C	N 36 C	N 48 C
type	IP 40 □ In 63A	IP 40 □ In 63A	IP 65 □ In 63A	IP 40 □ In 63A	IP 40 □ In 63A
dimensions	215 x 236 x 102	287 x 236 x 112	287 x 361 x 112	287 x 526 x 112	287 x 653 x 112
no. of modules	8	12	24	36	48
PE, N terminal	2 x 8	2 x 10	2 x 13	2 x 15	2 x 20



PLASTIC ENCLOSURE WITH PLASTIC DOOR



Plastic holder keeps the terminals on the position

Enclosures are completely assembled with all necessary part, such as:

- DIN rail
- Insulated terminals, neutral and ground
- Cover for blank space
- Needed installation accessories
- Manual instruction

\* Additional terminal upon request

	A	B	C	D	E
<b>N8C</b>	236 mm	215 mm	102 mm	107 mm	120 mm
<b>N12C</b>	236 mm	287 mm	112 mm	107 mm	180 mm
<b>N18C</b>	236 mm	396 mm	112 mm	107 mm	289 mm
<b>N24C</b>	361 mm	287 mm	112 mm	232 mm	180 mm
<b>N2x18C</b>	361 mm	396 mm	112 mm	232 mm	289 mm
<b>N36C 5</b>	26 mm	287 mm	112 mm	357 mm	180 mm
<b>N48C</b>	652 mm	287 mm	112 mm	482 mm	180 mm
<b>N3x18C</b>	526 mm	396 mm	112 mm	357 mm	289 mm

## series C

Material	Acrylonitrile butadiene styrene
Color	RAL 9003
Door	Acrylonitrile butadiene styrene
Color	Transparent / White
Glow wire test	650°C
Terminal holder	Self extinguish material
Glow wire test	960°C
Temperature	-25°C / +60°C
Rated voltage	AC 400V
According to	IEC 60670
Halogen free	Yes



name N18C  
 type IP 40 □ In 63A  
 dimensions 396 x 236 x 112  
 number of modules 18  
 PE, N terminal 2 x 13

name N2x18C  
 type IP 40 □ In 63A  
 dimensions 396 x 361 x 112  
 number of modules 36  
 PE, N terminal 2 x 15

name N3x18C  
 type IP 65 □ In 63A  
 dimensions 396 x 526 x 112  
 number of modules 54  
 PE, N terminal 2 x 25

ENCLOSURES IP40 – FLUSH MOUNTING

# series C



name U8C  
type IP 40 □ In 63A  
dimensions 211 x 232 x 99  
number of modules 8  
PE, N terminal 2 x 8

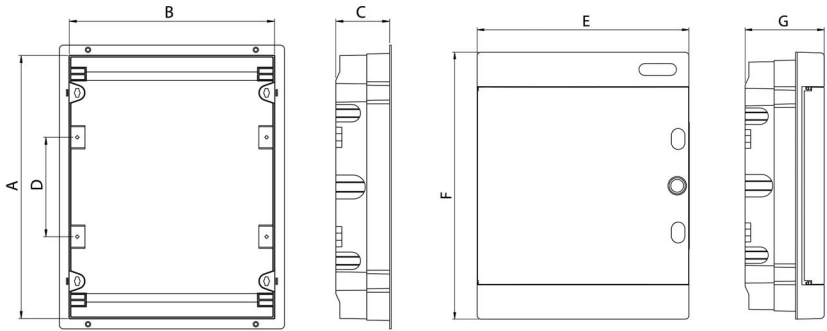
U12C  
IP 40 □ In 63A  
283 x 232 x 106  
12  
2 x 10

U24C  
IP 40 □ In 63A  
283 x 357 x 106  
24  
2 x 13

U24C  
IP 40 □ In 63A  
283 x 357 x 106  
24  
2 x 13



PLASTIC ENCLOSURE WITH PLASTIC DOOR



Enclosures are completely assembled with all necessary part, such as:

- DIN rail
- Insulated terminals, neutral and ground
- Cover for blank space
- Needed installation accessories
- Manual instruction

\* Additional terminal upon request

	A	B	C	D	E	F	G
<b>U8C</b>	212 mm	201 mm	68 mm	-	211 mm	232 mm	99 mm
<b>U12C</b>	212 mm	273 mm	68 mm	-	283 mm	232 mm	106 mm
<b>U24C</b>	336 mm	273 mm	68 mm	125 mm	283 mm	357 mm	106 mm
<b>U36C</b>	460 mm	273 mm	68 mm	125 mm	283 mm	482 mm	106 mm
<b>U18C</b>	212 mm	373 mm	68 mm	-	392 mm	232 mm	106 mm
<b>U2x18C</b>	336 mm	373 mm	68 mm	125 mm	392 mm	357 mm	106 mm
<b>U3x18C</b>	502 mm	373 mm	68 mm	125 mm	392 mm	522 mm	106 mm

## series c

Material	Acrylonitrile butadiene styrene
Color	RAL 9003
Door	Acrylonitrile butadiene styrene
Color	Transparent & White
Glow wire test	650°C
Terminal holder	Self extinguish material
Glow wire test	960°C
Temperature	-25°C / +60°C
Rated voltage	AC 400V
According to	IEC 60670
Halogen free	Yes



name

U18C

type

IP 40 In 63A

dimensions

392 x 232 x 106

number of modules

18

PE, N terminal

2 x 13

U2x18C

IP 40 In 63A

392 x 357 x 106

36

2 x 15

U3x18C

IP 40 In 63A

392 x 522 x 106

54

2 x 25



380V  
IP 30



1 | 7 | 8 | 9 | 10 | 11 | 12

20 | 21 | 22 | 23 | 24



series a



name **N 1 A**  
 type **IP 30 □ In 63A**  
 dimensions **137 x 51 x 57**  
 number of modules **1 (+1)**  
 PE, N terminal **-**



name **N 2 A**  
 type **IP 30 □ In 63A**  
 dimensions **137 x 87 x 57**  
 number of modules **3 (+1)**  
 PE, N terminal **-**



name **N 3 A**  
 type **IP 30 □ In 63A**  
 dimensions **97 x 155 x 57**  
 number of modules **3 (+2)**  
 PE, N terminal **2 x 4**



name **N 12 A**  
 type **IP 30 □ In 63A**  
 dimensions **250 x 225 x 70**  
 number of modules **12 + 2**  
 PE, N terminal **2 x 10**



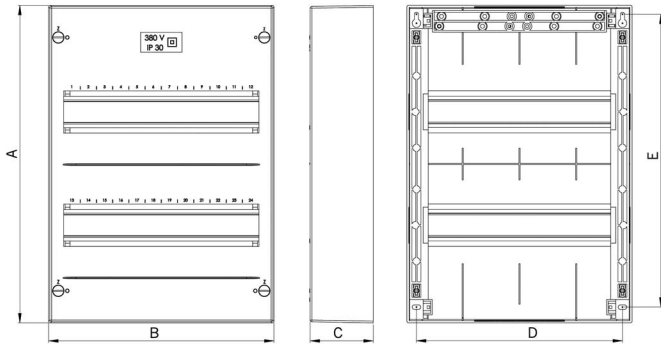
name **N 24 A**  
 type **IP 30 □ In 63A**  
 dimensions **250 x 353 x 70**  
 number of modules **24 + 4**  
 PE, N terminal **2 x 13**



name **N 36 A**  
 type **IP 30 □ In 63A**  
 dimensions **250 x 463 x 70**  
 number of modules **36 + 6**  
 PE, N terminal **2 x 15**







Enclosures are completely assembled with all necessary part, such as:

- DIN rail
- Insulated terminals, neutral and ground
- Cover for blank space
- Needed installation accessories
- Manual instruction

\* Additional terminal upon request

**series a**

	A	B	C	D	E	F	G
<b>N1A</b>	51 mm	139 mm	57 mm	34 mm	114 mm	-	-
<b>N2A</b>	87 mm	139 mm	57 mm	70 mm	114 mm	-	-
<b>N3A</b>	-	-	-	-	-	-	-
<b>N12A</b>	225 mm	250 mm	70 mm	229 mm	198 mm	-	-
<b>N24A</b>	353 mm	250 mm	70 mm	229 mm	326 mm	125 mm	-
<b>N36A</b>	463 mm	250 mm	70 mm	229 mm	463 mm	125 mm	-

Material	Styrene
Color	RAL 9003
Glow wire test	650°C
Terminal holder	Self extinguish material
Glow wire test	960°C
Temperature	-25°C / +60°C
Rated voltage	AC 400V
According to	IEC 60670
Halogen free	Yes



ENCLOSURES IP40 – FLUSH MOUNTING

# series a



\*Optional  
with white plastic doors



name U 12 A

type IP 40 □ In 63A

dimensions 338 x 260 x 92

number of modules 12 + 2

PE, N terminal 2 x 10

U 24 A

IP 40 □ In 63A

338 x 380 x 92

24 + 4

2 x 13

U 36 A

IP 40 □ In 63A

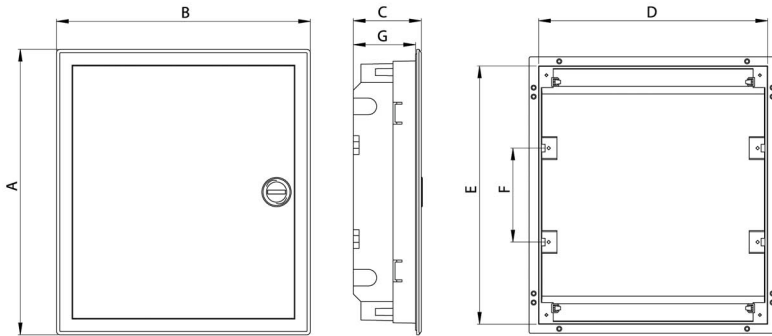
338 x 508 x 88

36 + 6

2 x 15



PLASTIC ENCLOSURE WITH PLASTIC DOOR



Enclosures are completely assembled with all necessary part, such as:

- DIN rail
- Insulated terminals, neutral and ground
- Cover for blank space
- Needed installation accessories
- Manual instruction

\* Additional terminal upon request

**series a**

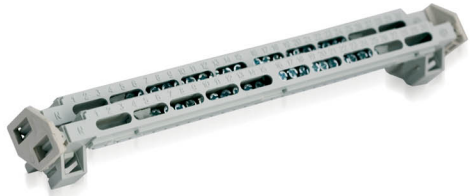
	A	B	C	D	E	F	G
<b>U12A</b>	260 mm	338 mm	92 mm	310 mm	231 mm	-	83 mm
<b>U24A</b>	380 mm	338 mm	92 mm	310 mm	349 mm	125 mm	83 mm
<b>U36A</b>	508 mm	338 mm	88 mm	310 mm	480 mm	125 mm	78 mm

Material	Styrene
Color	RAL 9003
Door	Styrene Acrylonitrile
Color	Transparent / White
Glow wire test	650°C
Terminal holder	Self extinguish material
Glow wire test	960°C
Temperature	-25°C / +60°C
Rated voltage	AC 400V
According to	IEC 60670
Halogen free	Yes



## INSULATED TERMINAL

**Material:** PBT - Polyphenylene (Lumiloy)  
**Flamability:** Self extinguish V2  
**Glow wire test:** 960° C  
**12 modules and more**



## EARTH AND NEUTRAL TERMINAL (WITH HOLDER FOR DIN RAILS)



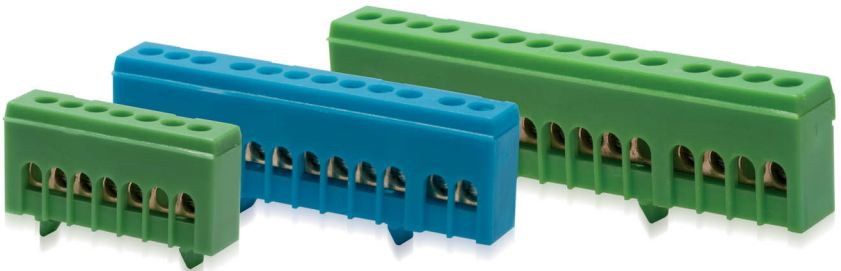
## EARTH AND NEUTRAL TERMINAL

**K5** - 5 holes/ **K8** - 8 holes/ **K10** - 10 holes/ **K140** - 1 meter  
Hole diameter: 5.5 mm  
Cable size: 24 mm<sup>2</sup>  
Screw size: M5x8 Ph#2 Combi (±)Cross Zinc plated A2F



## INSULATED EARTH AND NEUTRAL TERMINAL FOR DIN RAILS

**PE/N 7, PE/N 12, PE/N 15**



## WHITE DOOR / XX-W

White door and lock are available for all enclosures type **C**



## MULTIPLE PLUG BOX / SP1

Dimensions: 80 x 80 x 28 mm



## COVER FOR THE EMPTY PLACE / PP

Material: Poliamid; Dimensions: 226 x 52 mm



## LOCK

Available for enclosures type **C, D and E**



## HOLDER FOR ELECTROMETER

For enclosures type **C, D and E**



NB  
Dimensions  
185 x 370 x 35 mm



NB2  
Dimensions  
210 x 370 x 15 mm

## ENCLOSURE FOR MULTIMEDIA AND COMMUNICATION DEVICES



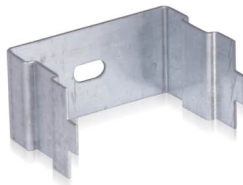
- telephone connection
- wireless router
- antenna, cable or satellite TV connection
- ISDN
- ASSL modem
- ...

### MOUNTING PLATE, PERFORATED



Material: steel sheet, zinc plated  
Height: 110 mm  
Installation: one mountig plate per row

### CONNECTION BRACKET



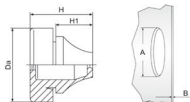
Material: steel sheet, zinc plated  
Height: 110 mm  
Installation: one mountig plate per row

# accessories



## TECHNOSEAL

Material: EPDM - Halogen Free Resistant to chemicals and weatherproof.  
 Made of protection: IP67 acc. to EN 60592  
 Temperature range: -40°C +110°C (Unstressed material)  
 Test standard: SEMKO 44:1984  
 Semko report: 0211038/01-07



*Suitable for holes in materials of 0,5 - 4 mm thickness.  
 Quick and simple assembly without the use of tools.*

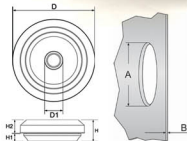
**RAL 7035**

E-number	size	For cable/ pipe Ø mm	A mm	B mm	Da mm	H mm	H1 mm	Pcs pack
<b>T_14 582 33</b>	M12	4 - 7	12,5	0,5 - 2	20	12,8	5,6	50
<b>T_14 582 34</b>	M16	5 - 9	16,5	1 - 4	21	17,7	11	50
<b>T_14 582 35</b>	M20	8 - 13	20,5	1 - 4	25,5	20	13,4	50
<b>T_14 582 36</b>	M25	11 - 17	25,5	1 - 4	30,5	21,3	15,3	50
<b>T_14 582 37</b>	M32	15 - 20	32,5	1 - 4	38,5	24,6	18,6	25
<b>T_14 582 38</b>	M40	19 - 28	40,5	1 - 4	48,5	29,5	21,7	25
<b>T_14 582 39</b>	M50	27 - 35	50,5	1 - 4	60,5	34,8	25	10



## TSS

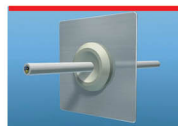
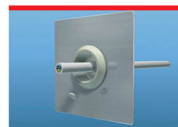
Material: TPE - Thermoplastic Elastomer- Halogen Free.  
 UL approved material  
 Made of protection: IP67  
 Temperature range: -50°C +125°C (Unstressed material)  
 Test standard: EN60529:1991+A1,  
 EMKO-TUI (03-SEC) FI001/84  
 Semko report: M16 - 708555-1  
 M20 - 708555-2  
 M25 - 708555-3  
 M32 - 708555-4



*Quick and simple assembly without the use of tools.  
 Handles exceptionally large cable span  
 An end-plug for all applications*

**RAL 7035**

E-number	size	For cable/ pipe Ø mm	A mm	B mm	D* mm	D1 mm	H mm	H1 mm	H2* mm	Pcs pack
<b>T_14 757 11</b>	M16	5 - 10	16,5	0,5 - 3	23,5	4	11	4	6,75	50
<b>T_14 757 12</b>	M20	6 - 13	20,5	0,5 - 3	27,5	5	11	4	6,75	50
<b>T_14 757 13</b>	M25	8 - 17	25,5	0,5 - 3,5	32,5	7	11	4	6,75	50
<b>T_14 757 14</b>	M32	12 - 24	32,5	0,5 - 4,5	39,5	11	11	4	6,75	25



\*Varies depending on the thickness of material installed in.

# accessories

## COPPER BUSBARS

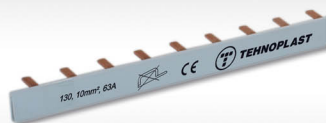
### BUSBARS FOR MCBS – ELEMENTS, 1 PHASE, PIN TYPE

Artical	Lenght mm	Pole	Section (mm <sup>2</sup> )	I (A)
<b>110</b>	1000	56 x 1	10	63
<b>110 S</b>	210	12 x 1	10	63
<b>111</b>	1000	56 x 1	16	80
<b>111 S</b>	210	12 x 1	16	80



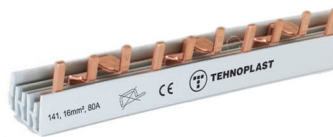
### BUSBARS FOR MCBS – ELEMENTS, 1 PHASE, PIN TYPE, INSULATED

Artical	Lenght mm	Pole	Section (mm <sup>2</sup> )	I (A)
<b>130</b>	1000	56 x 1	10	63
<b>130 S</b>	210	12 x 1	10	63
<b>131</b>	1000	56 x 1	16	80
<b>131 S</b>	210	12 x 1	16	80



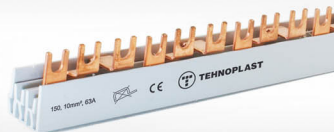
### BUSBARS, 3- PHASES, PIN TYPE, FOR MCBS ELEMENTS, L- STYLE

Artical	Lenght mm	Pole	Section (mm <sup>2</sup> )	I (A)
<b>140</b>	1000	19 x 3	10	63
<b>140 S</b>	210	4 x 3	10	63
<b>141</b>	1000	19 x 3	16	80
<b>141 S</b>	210	4 x 3	16	80



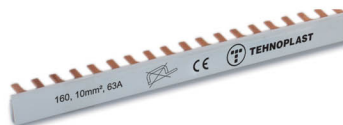
### BUSBARS, 3- PHASES, FORK TYPE, FOR MCBS ELEMENTS, L- STYLE

Artical	Lenght mm	Pole	Section (mm <sup>2</sup> )	I (A)
<b>150</b>	1000	19 x 3	10	63
<b>150 S</b>	210	4 x 3	10	63
<b>151</b>	1000	19 x 3	16	80
<b>151 S</b>	210	4 x 3	16	80



### BUSBARS FOR MCBS – ELEMENTS, 1 PHASE, FORK TYPE, INSULATED

Artical	Lenght mm	Pole	Section (mm <sup>2</sup> )	I (A)
<b>160</b>	1000	56 x 1	10	63
<b>160 S</b>	210	12 x 1	10	63
<b>161</b>	1000	56 x 1	16	80
<b>161 S</b>	210	12 x 1	16	80





<b>Description</b>	Busbar
<b>Type</b>	1 / 3 – phase

### TECHNICAL DATA

<b>Busbar</b>	Copper
<b>Insulation</b>	ABS
<b>End cover</b>	RAL 7035

### GENERAL DATA

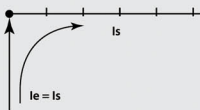
Heat deflection temperature	ABS $\geq 80^{\circ}\text{C}$ UL94 V0
Glow Wire Flammability Index	ABS $960^{\circ}\text{C}$ / 3,2mm
Standards	EN 60947-1:2007 / IEC 60947-1:2007
Impulse voltage strength	$\geq 4,5$ kV
Minimal air distance	$> 5,5$ mm
Maximal operating voltage	690 V AC / DC
Protection class	IP20
Short circuit rating	ICC 25kA - NH3 355A gC500V JM
Dielectric strength	$> 32$ kV / mm
Max. current and Phase	63 A 80 A
Product size mm <sup>2</sup>	10 mm <sup>2</sup> 16mm <sup>2</sup>

### ASSEMBLY DETAILS

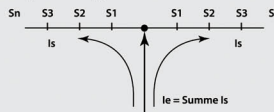
Due to security purposes all shortened bus bars need to be covered with suitable end covers

### FEEDING

Feeding at beginning or end of bar



In case of center-feeding, the sum of junction currents  $S1..Sn$  per rail branch may not be bigger than the maximal busbar current



### APPROVAL AND MARKING

Products are CE and ROHS conform



# certificates

		Ref. Certif. No. <b>SI-325</b>
THE SYSTEM FOR MUTUAL RECOGNITION OF TEST CERTIFICATES FOR ELECTRICAL EQUIPMENT (IEC) / SYSTEME D'ACCEPTATION MUTUELLE DE CERTIFICATS D'ESSAIS POUR EQUIPEMENTS ELECTRIQUES (IEC)		
<b>CB TEST CERTIFICATE</b>		<b>CERTIFICAT D'ESSAI OC</b>
Product / Produit  Name and address of the applicant / Nom et adresse du demandeur  Name and address of the manufacturer / Nom et adresse du fabricant  Name and address of the factory / Nom et adresse de l'usine  Name, address and telephone number of the importer / Nom, adresse et numéro de téléphone de l'importateur  Ratings and principal characteristics / Valeurs nominales et caractéristiques principales  End-use(s) / Usage(s)  Type of manufacturer's testing laboratory and type of programme or laboratory device concerned  Model / Type Ref. / Ref. Des. Type  Additional information if necessary may also be entered on page 2 / Les informations complémentaires, s'il y a lieu, sont indiquées sur la 2 <sup>e</sup> page  A sample of the product was tested and found to be in conformity with the requirements of the certificate / Un échantillon de ce produit a été essayé et est conforme aux exigences du certificat  See Annex to the Test Report Ref. No. which forms part of this Certificate / Consulter l'annexe des données relatives à l'essai mentionné dans le rapport qui constitue partie de ce Certificat	Installation boxes  Tehnoplast d.o.o. Zdravka Jekica 119, 22305 Stari Banovci, Serbia  Tehnoplast d.o.o. Zdravka Jekica 119, 22305 Stari Banovci, Serbia  Tehnoplast d.o.o. Zdravka Jekica 119, 22305 Stari Banovci, Serbia  400 V, IP40, Class II  THERMOPLAST  /  Surface mount: N4C, N2-C, N3-C, N24-C, N36-C, N48-C, N63-C Flush mount: U4-C, U23-C, U18-C, U24-C, U36-C and U248-C  /  IEC 60670-24: 2011 (Second Edition) IEC 60670-1: 2002 (First Edition) + A1:2011  T21-040513	
This CB Test Certificate is issued by the National Certification Body / Ce Certificat d'Essai OC est délivré par l'Organisme National de Certifications		Slovenski inštitut za kalibracijo in merenje / Slovenian Institute of Quality and Metrology / Institutul c. c. SI-100 Lugojani, Slovenia
		Signature: Zoran Svetlik
Date: 2013-01-23		2009-03

**ÖVE AUSTRIAN ELECTROTECHNICAL ASSOCIATION**  
 Eschenbochgasse 9, 1010 Wien, Austria  
 ZVR: 327278990 | DVR: 1055887  
**ÖVE - Testing & Certification**  
 Kahlenbergstr. 26, 1100 Wien, Austria  
 Phone: +43 1 370 58 06  
 www.ove.at

Page 1 of 2

## ÖVE-CERTIFICATE

including the entitlement to use the Austrian Safety Mark

Certificate No.: **47572-006-00** Valid from: 2014 07 10 until: 2016 07 10

The Austrian Electrotechnical Association (ÖVE) hereby grants the right to the company mentioned below to label the listed products with the Austrian Safety Mark.

Company: **TEHNOPLAST D.O.O.**  
 Zdravka Jekica 119  
 22305 Stari Banovci  
 Serbia, Republic of

Product: **Installation boxes (empty enclosures)**

Basis for this given right is the conformity of the products with the requirements of the technical standards listed in this certificate as stated in the file(s) Ref. No(s): **TGM-VA EE 33608**.

This certificate establishes the conformity of the tested specimen and of all products manufactured strictly identical to the submitted one.

**Österreichischer Verband für Elektrotechnik**  
 Head of Testing & Certification  
 Digitally signed by W. Martin  
 Email: martin@ovest.at  
 Dipl.-Ing. W. Martin

Vienna, 2014 07 10

**ÖVE - Testing & Certification**  
 Accredited by the Federal Ministry of Science, Research and Economy as Certification Body for products within the scope as given in the official decree and published under: www.ovest.at/akkreditiert

**ÖVE AUSTRIAN ELECTROTECHNICAL ASSOCIATION**  
 Eschenbochgasse 9, 1010 Wien, Austria  
 ZVR: 327278990 | DVR: 1055887  
**ÖVE - Testing & Certification**  
 Kahlenbergstr. 26, 1100 Wien, Austria  
 Phone: +43 1 370 58 06  
 www.ove.at

Page 1 of 2

## ÖVE-CERTIFICATE

including the entitlement to use the Austrian Safety Mark

Certificate No.: **47572-005-02** Valid from: 2015 10 24 until: 2017 10 24

The Austrian Electrotechnical Association (ÖVE) hereby grants the right to the company mentioned below to label the listed products with the Austrian Safety Mark.

Company: **TEHNOPLAST D.O.O.**  
 Zdravka Jekica 119  
 22305 Stari Banovci  
 Serbia, Republic of

Product: **Pillar terminal**

Basis for this given right is the conformity of the products with the requirements of the technical standards listed in this certificate as stated in the file(s) Ref. No(s): **TGM-VA EE 33855**.

This certificate establishes the conformity of the tested specimen and of all products manufactured strictly identical to the submitted one.

**Österreichischer Verband für Elektrotechnik**  
 Head of Testing & Certification  
 Digitally signed by W. Martin  
 Email: martin@ovest.at  
 Dipl.-Ing. W. Martin

Vienna, 2015 09 21

**ÖVE - Testing & Certification**  
 Accredited by the Federal Ministry of Science, Research and Economy as Certification Body for products within the scope as given in the official decree and published under: www.ovest.at/akkreditiert

**ÖVE AUSTRIAN ELECTROTECHNICAL ASSOCIATION**  
 Eschenbochgasse 9, 1010 Wien, Austria  
 ZVR: 327278990 | DVR: 1055887  
**ÖVE - Testing & Certification**  
 Kahlenbergstr. 26, 1100 Wien, Austria  
 Phone: +43 1 370 58 06  
 www.ove.at

Page 1 of 2

## ÖVE-CERTIFICATE

including the entitlement to use the Austrian Safety Mark

Certificate No.: **47572-004-02** Valid from: 2015 07 27 until: 2017 07 27

The Austrian Electrotechnical Association (ÖVE) hereby grants the right to the company mentioned below to label the listed products with the Austrian Safety Mark.

Company: **TEHNOPLAST D.O.O.**  
 Zdravka Jekica 119  
 22305 Stari Banovci  
 Serbia, Republic of

Product: **Base-plate for meter**

Basis for this given right is the conformity of the products with the requirements of the technical standards listed in this certificate as stated in the file(s) Ref. No(s): **TGM-VA EE 33856**.

This certificate establishes the conformity of the tested specimen and of all products manufactured strictly identical to the submitted one.

**Österreichischer Verband für Elektrotechnik**  
 Head of Testing & Certification  
 Digitally signed by W. Martin  
 Email: martin@ovest.at  
 Dipl.-Ing. W. Martin

Vienna, 2015 09 21

**ÖVE - Testing & Certification**  
 Accredited by the Federal Ministry of Science, Research and Economy as Certification Body for products within the scope as given in the official decree and published under: www.ovest.at/akkreditiert

Design in function of safety



Tehnoplast doo, 22305 Stari Banovci, Zdravka Jekića 119, Serbia

Tel/Fax: + 381 (0) 22 351-223, + 381 (0) 22 351-983, + 381 (0) 22 351-804

e-mail: [office@tehno-plast.com](mailto:office@tehno-plast.com)

[www.tehno-plast.com](http://www.tehno-plast.com)